



# SCALE AND RENDER

# TASKS

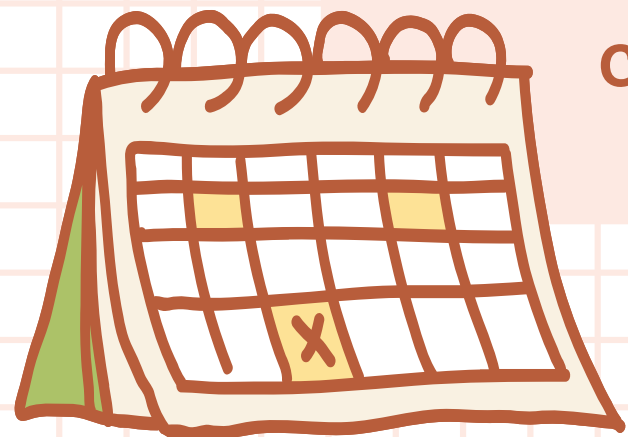


- Understand what a scale bar is.
- Process of rendering
- How to add a scale bar
- Draw a Scale bar

# PROJECT OVERVIEW

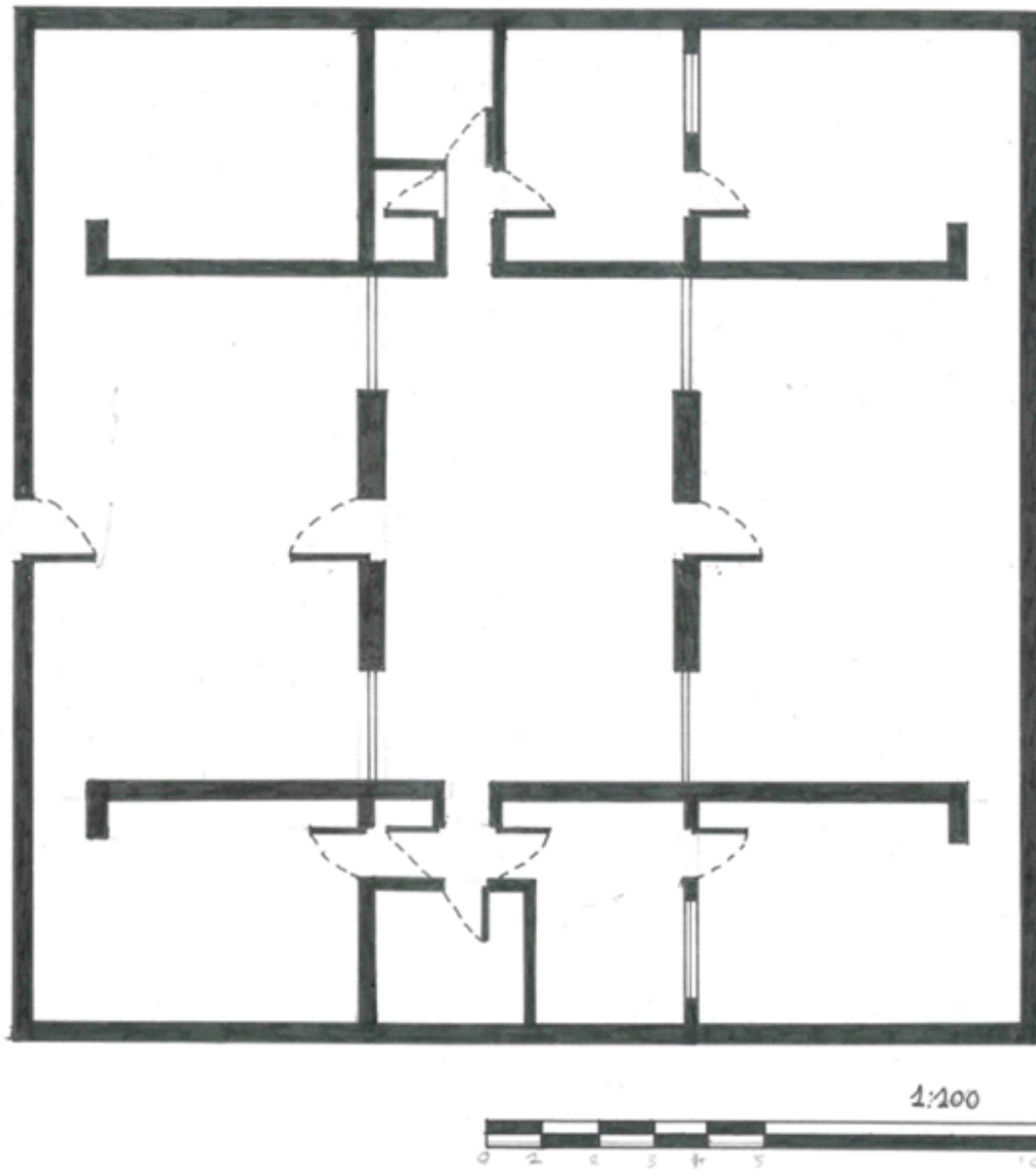
Scale in architecture is important because it helps to show the true size and proportions of a building or space:

1. Shows Real Size: Scale makes sure that the drawing reflects the actual size of things, understanding how big or small parts of a building really are.
2. Helps Build It Right: Builders use scaled drawings to know the exact size of walls, rooms, windows, etc., so they can build it correctly.
3. Space Planning: Scale helps architects figure out how to arrange spaces, like how big rooms should be or how to fit everything inside the building.
4. Meets Rules: Scaled drawings ensure that the design follows building codes or legal requirements for things like room sizes or building height.

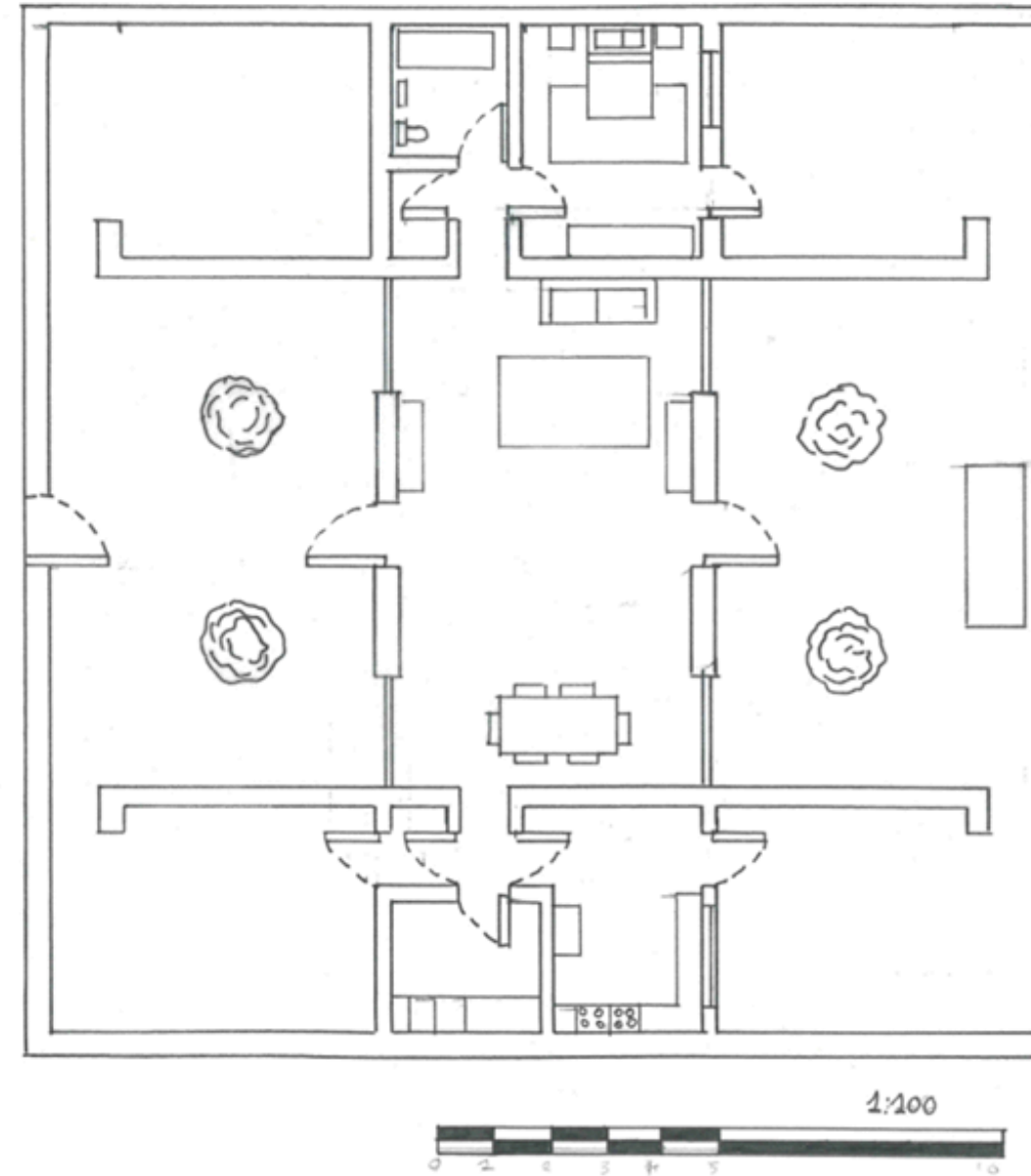


# 1:100 FLOORPLAN

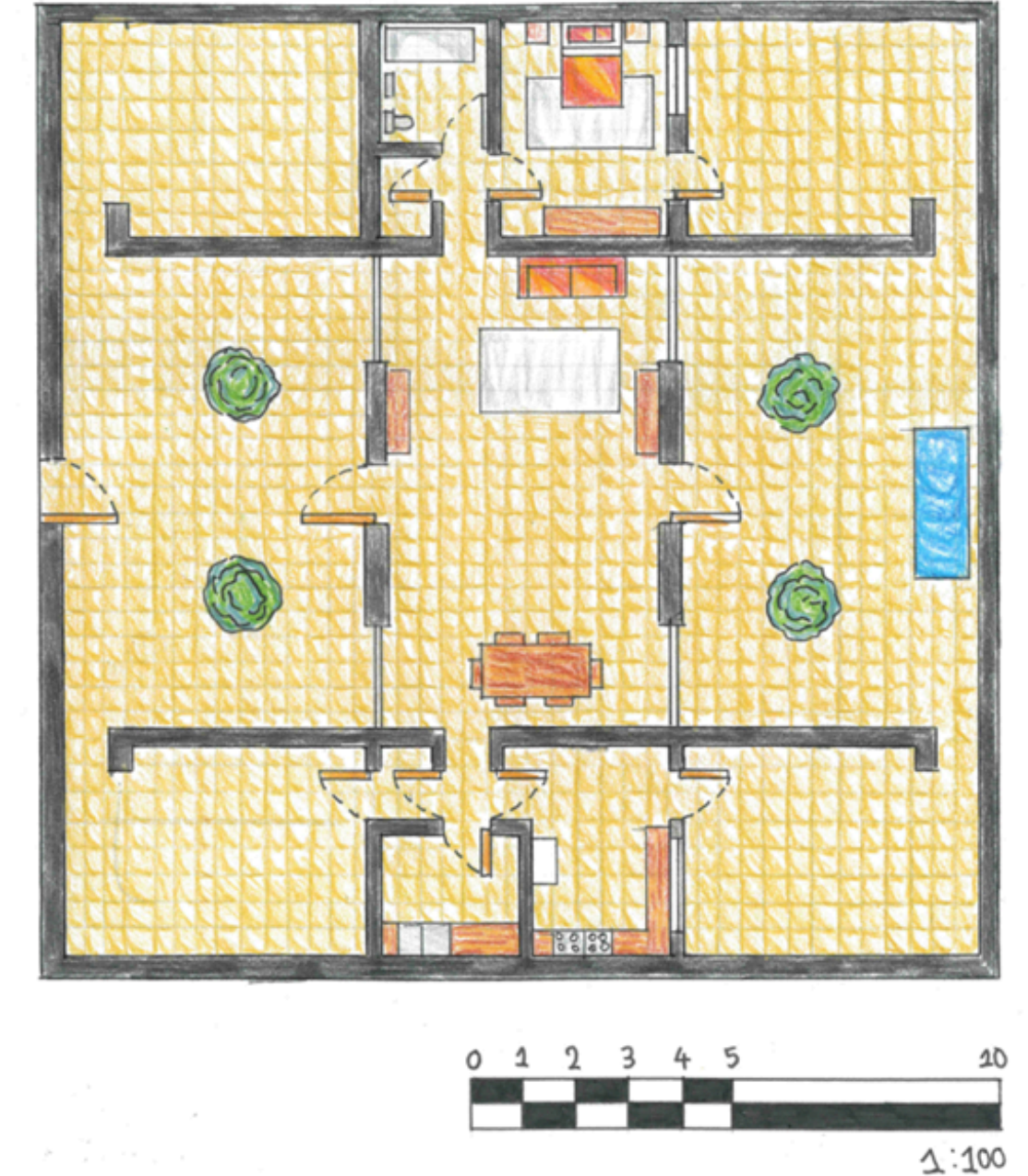
1. Fine Liner Floor plan



2. Fine liner drawing with furniture

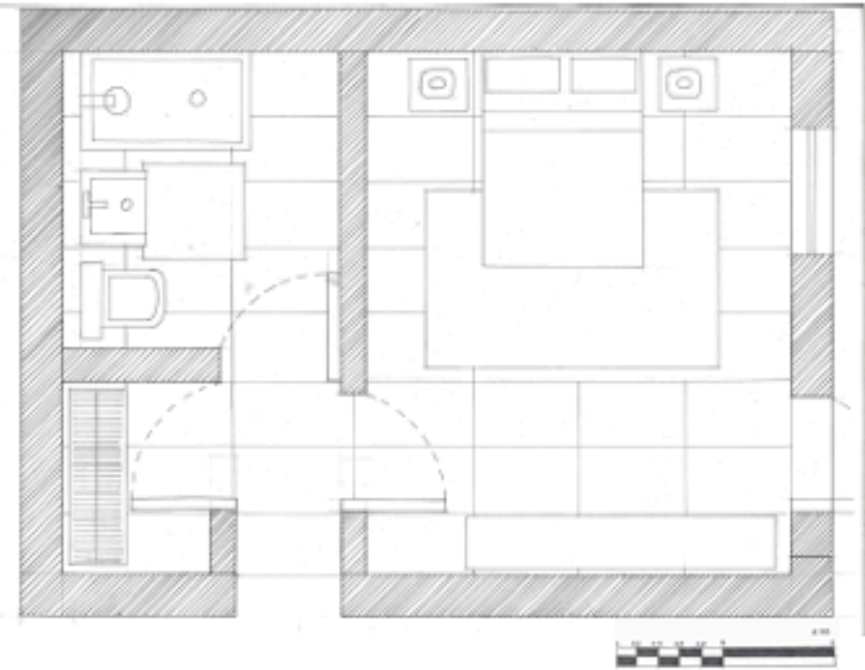
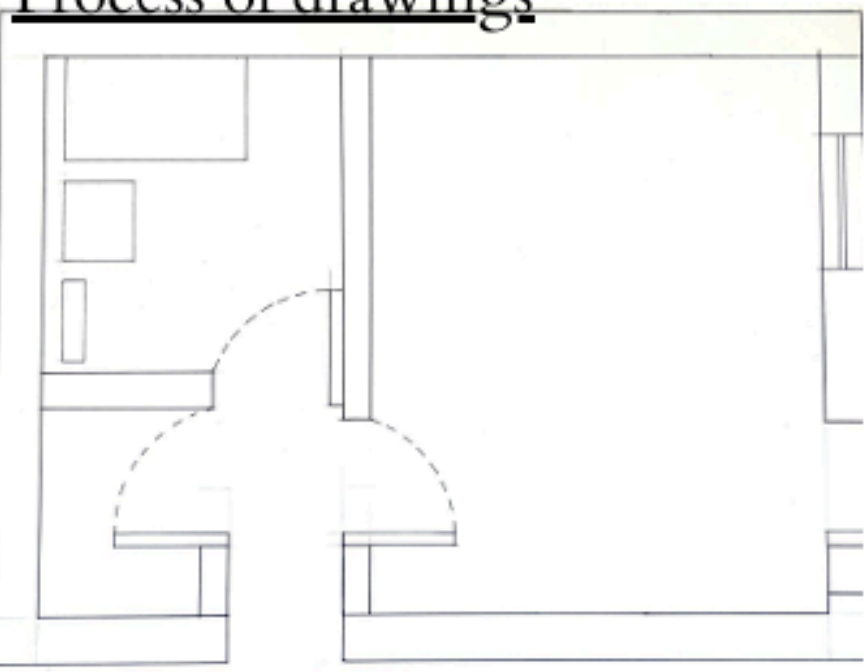


3. Fine rendered drawing





# 1:20 ROOM FLOORPLAN



~

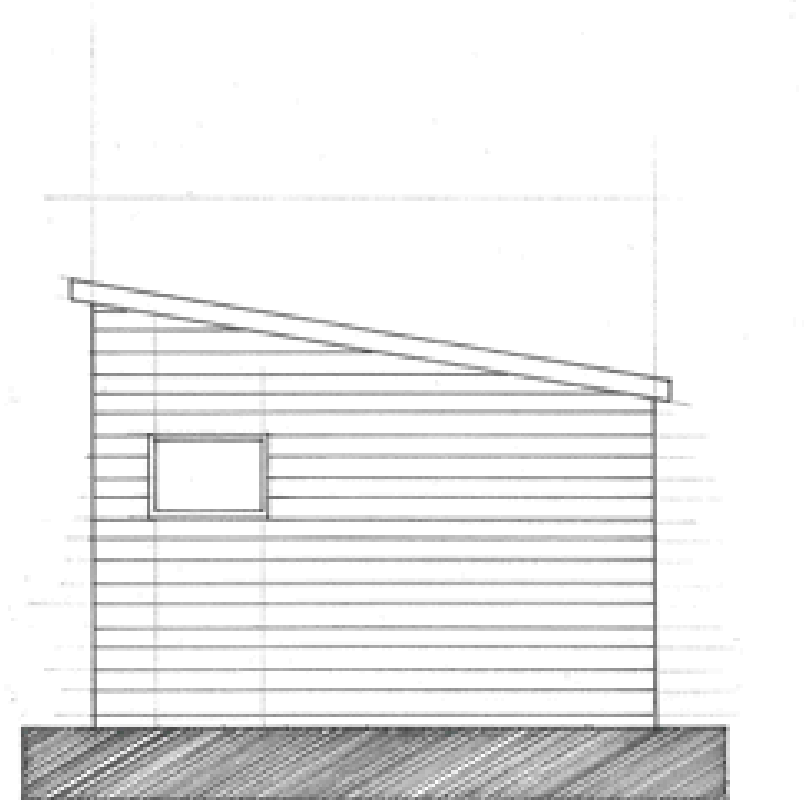
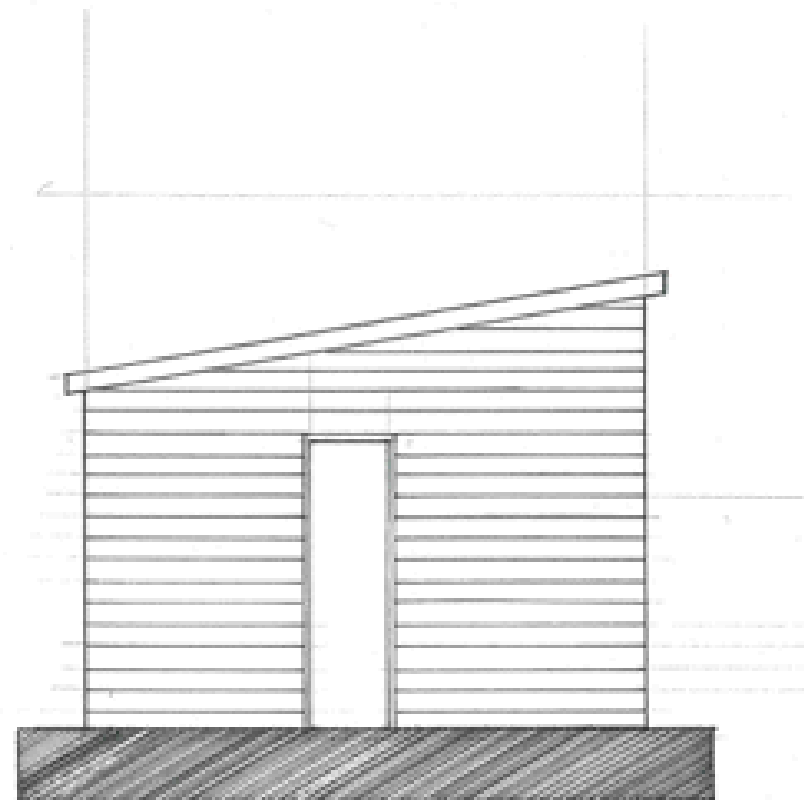
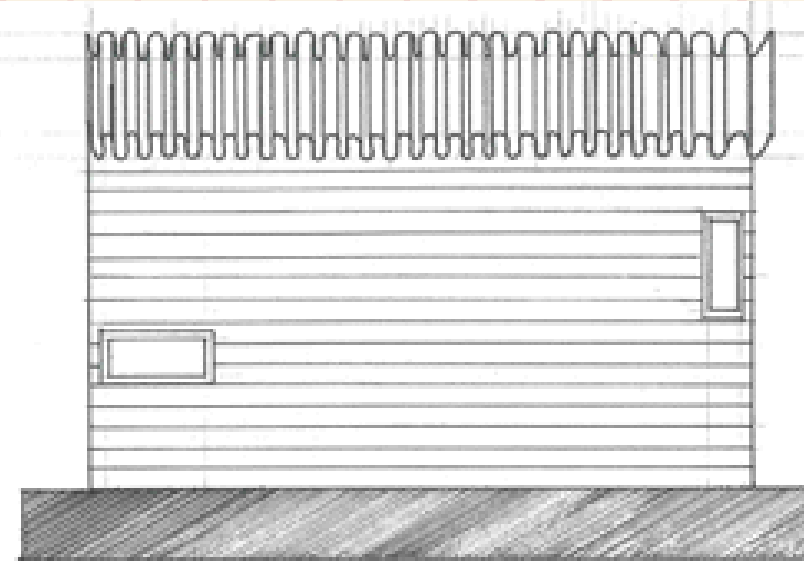
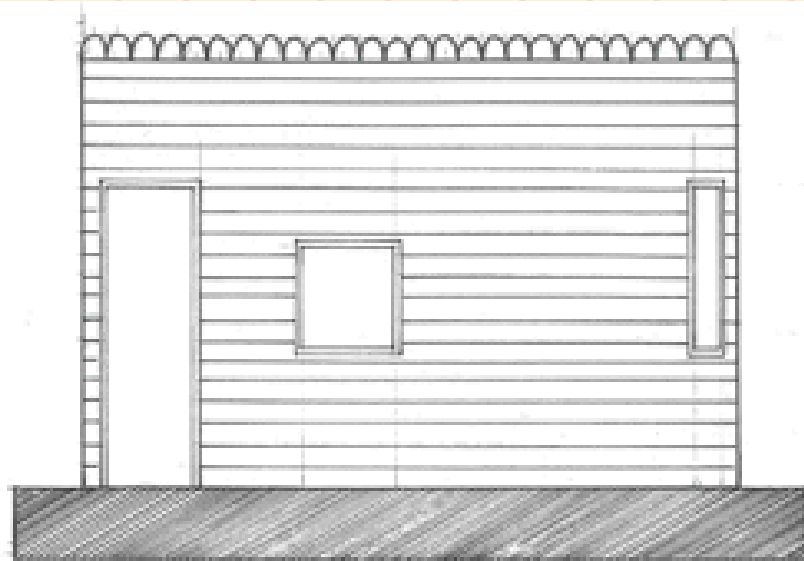
~ /



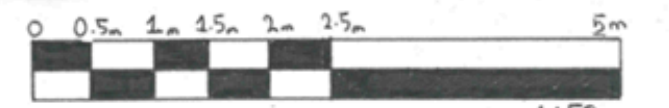
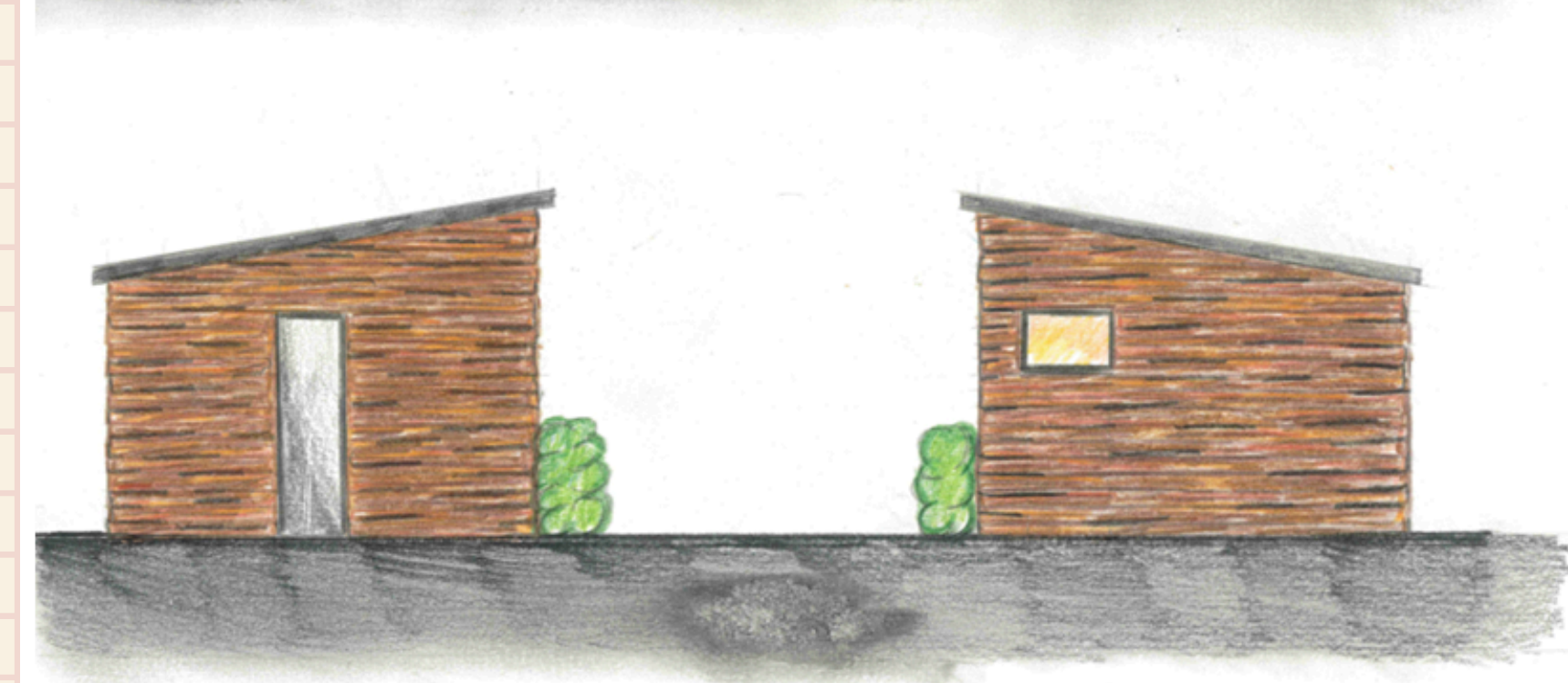
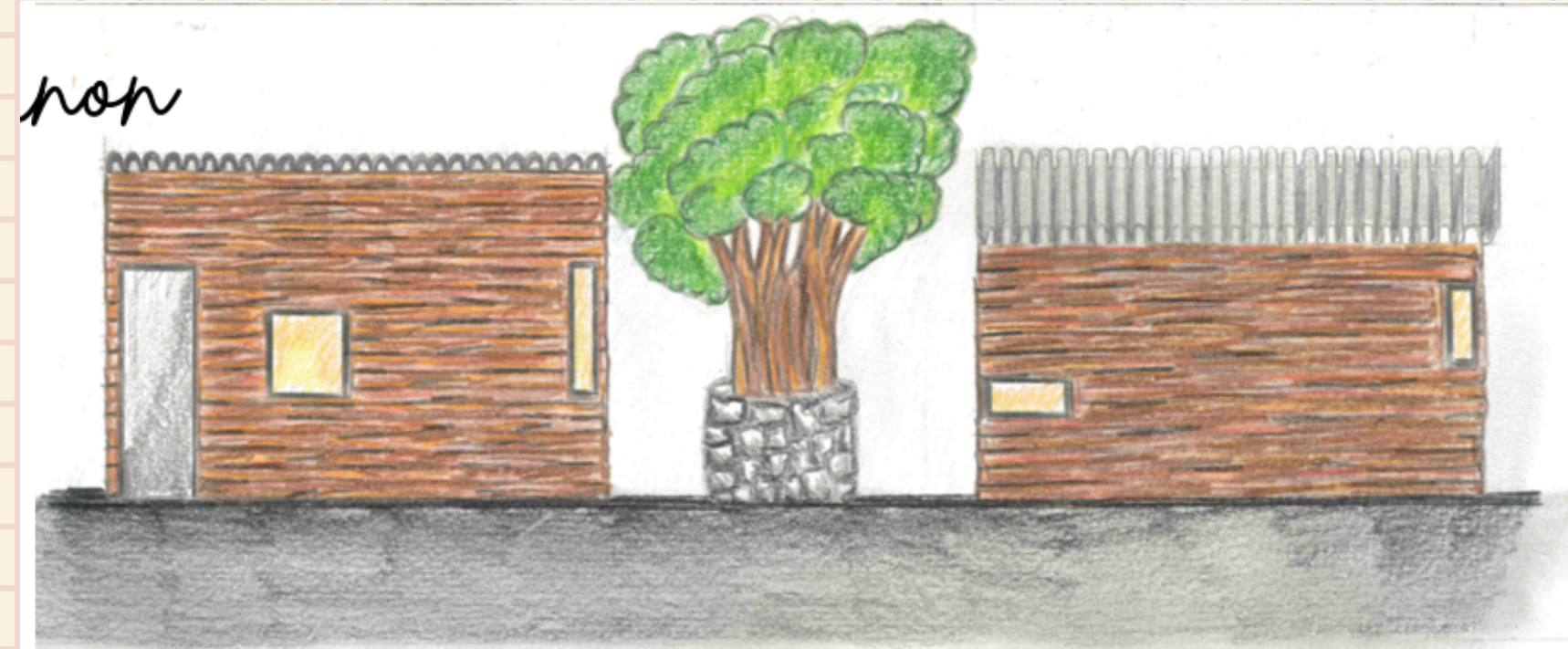




# SCALED DRAWINGS



1:50



1:50

# HOW TO DRAW A SCALE BAR

Goal 1 = 1:100 Scale Bar

Goal 2 = 1:20 Scale Bar

Goal 3 = 1:50 Scale Bar

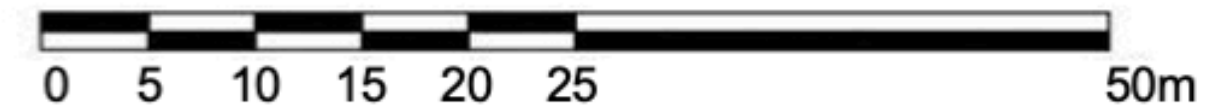
SCALE 1:2000



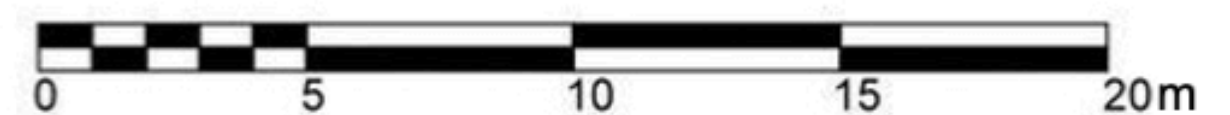
SCALE 1:1000



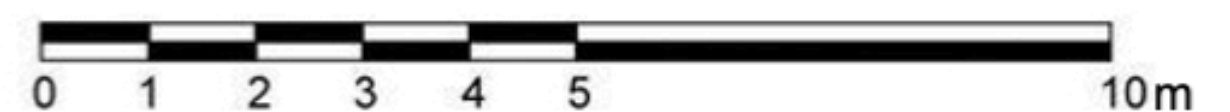
SCALE 1:500



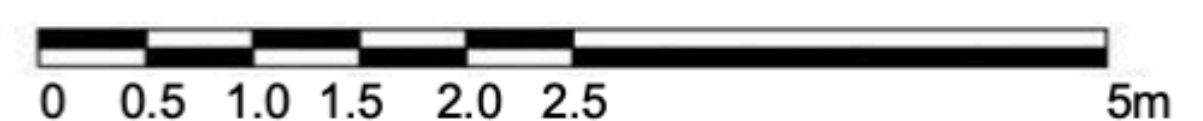
SCALE 1:200



SCALE 1:100



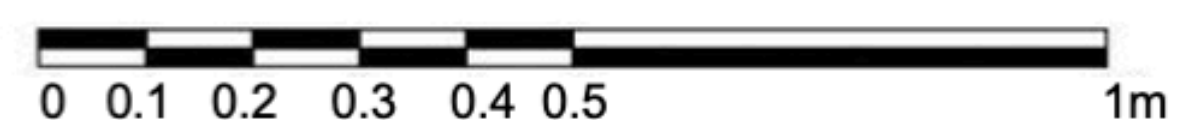
SCALE 1:50



SCALE 1:20



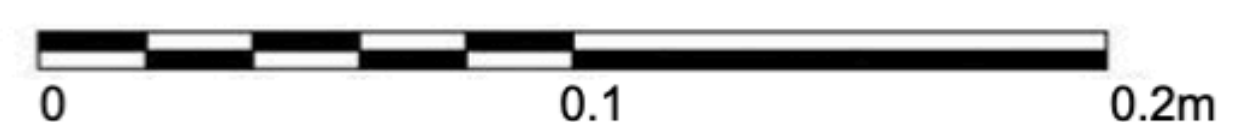
SCALE 1:10



SCALE 1:5



SCALE 1:2



**THANKYOU**

